

F E N Ê T R E S

PANORAMA
INC.

W I N D O W S

www.wiltonpanorama.com

HYBRID PR
CASEMENT AND
AWNING

YOUR COMFORT IS OUR PRIORITY



PVC CORE WITH EXTERIOR
ALUMINUM CLADDING

ENJOY THE BENEFITS OF PVC

AND APPRECIATE THE BEAUTY OF ALUMINUM



EXCEPTIONAL INSULATION

With their PVC core, these windows are among the most energy-efficient on the market. Our **multi-chamber design** reduces thermal exchange and the extra enclosed air space—more than any other brand—provides better **insulation value** without additional insulating material, making this technology more affordable and more easily recyclable.

STRONGER JOINTS

PVC profiles are welded, making them **tougher** than mechanically assembled products. Because this design has more internal walls, the joints are extra-strong. Our products pass the strictest forced entry and structural tests with flying colors.

OVERALL HIGH PERFORMANCE

These windows can be used with energy efficient low-E glass or with triple glazing, the top-performing glass on the market today.

ULTRA AIRTIGHT

Put an end to drafts with our windows. Built to be **ultra airtight**, they're among the best in the industry. You can feel the difference—less air exchange equals more **energy savings**.

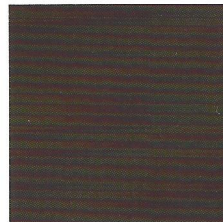
FINE CRAFTSMANSHIP

The hybrid casement window has been carefully designed and is assembled with precision, resulting in flawless window corner joints.

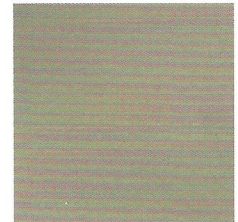
BAKED ENAMEL PAINT FINISH

Thermoset acrylic coatings are known for their superior resistance to corrosion, impact and superficial scratching.

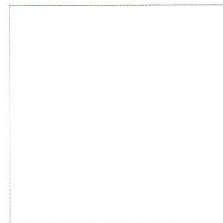
VARIETY OF STANDARD COLORS AVAILABLE*



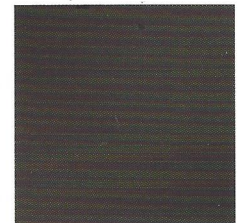
Commercial brown K7390



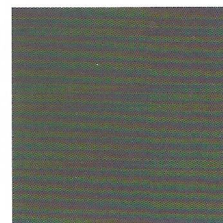
Kaki UC90590



White K1285



Black K90421



Slate UC108935

*We offer several optional colours, including clear anodized. Actual colours may differ slightly from the printed version.

Availability of standard colors may vary between colonial and contemporary design.

STANDARD FEATURES

CASEMENT AND AWNING WINDOWS

- Encore style folding handles
- Multi-point locking system
- Triple weather-stripping including a co-extruded PVC blade on the outside
- All casement window sashes open to 90 degrees facilitating cleaning and maximizing air circulation
- A variety of frame extensions and accessories are available to suit your project's needs
- Fusion-welded corners

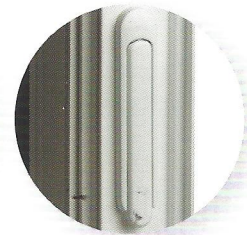


CHOICE OF COLONIAL OR CONTEMPORARY DESIGN

STANDARD HARDWARE

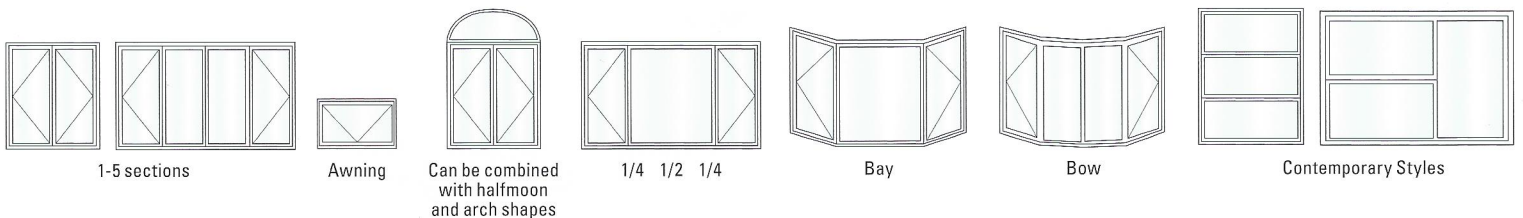


Encore style folding handles



Multi-point Nova Slim locking system

BLENDED STYLE AND PERFORMANCE



1-5 sections

Awning

Can be combined with halfmoon and arch shapes

1/4 1/2 1/4

Bay

Bow

Contemporary Styles

HIGH PERFORMANCE

WITH UNRIVALED PRECISION

EXCEPTIONAL INSULATION

Panorama's casement and awning frames have placed them at the summit of the industry in terms of energy efficiency. Their unique design maximizes insulating properties and allows for energy savings, comfort and peace of mind for years to come.



THE SOUND OF SILENCE

Shhhh... Enjoy peace and tranquility with your Panorama Windows! Multi-chamber extrusion profiles and multiple weather-stripping help eliminate most outside noise.

ULTRA AIRTIGHT

Say no to drafts with Panorama's casement and awning windows. Built to withstand our Canadian winters, they're among the best in the industry.

F E N Ê T R E S
PANORAMA
W I N D O W S

www.wiltonpanorama.com



A WORRY FREE INVESTMENT

SPECIAL PVC RECIPE IS RESISTANT TO COLOUR CHANGES

Let there be light! Our exclusive PVC formula stands up to UV rays. Tested in Arizona, it's proven to be at least twice as resistant to colour change as the competition's PVC. Your Panorama PVC window frames won't yellow, bleach, or fade.

HIGH-PERFORMANCE WINDOWS AT COMPETITIVE PRICES

Panorama Windows Inc. is a company that specializes in producing the highest quality window products. A member of the Wilton-Panorama group of companies which was founded in 1969, Panorama excels in the field, always on the cutting edge of innovation, development and client service.



PANORAMA WARRANTY

- 20 years** All PVC and aluminum extrusions
- 20 years** Seal failure of thermo units
- 10 years** Casement and awning window hardware

For more details, please ask your sales representative for our written detailed guarantee.

